

BAHRIA CLASSIFICATION SOCIETY



BCS-I TM

Interpretations of the Tonnage Measurement

July 2022

These interpretations are prepared by embedding related IACS Unified Interpretations. In order to have consistency, the numbering of the interpretations are kept as the same with related IACS Unified Interpretations.

Unless otherwise specified, these Rules apply according to the implementation dates as defined in each interpretation. See Rule Change Summary on BCS website for revision details.

This latest edition incorporates all rule changes.

"General Terms and Conditions" of the respective latest edition will be applicable (see Rules for Classification and Surveys).

If there is a difference between the rules in English the rule in English is to be considered as valid. This publication is available in print and electronic pdf version . Once downloaded, this document will become UNCONTROLLED. Please check the website below for the valid version.

<https://www.bahriaclassificationsociety.org/>

All rights are reserved by Bahria Classification Society, and content may not be reproduced , disseminated , published , or transferred in any form or by any means, except with the prior written permission of BCS.

BAHRIA CLASSIFICATION SOCIETY

Head Office

Third Floor, Bahria Complex II, M.T Khan Road, Karachi

Tel : +92-2135640738 (Ext 603 & 605)

Email : riazuddin@bahriafoundation.com

Website : <https://www.bahriaclassificationsociety.org/>

CONTENTS

BCS-I TM1 Determination of Moulded Depth (D) for Ships with
an Open Mooring Deck Aft or Stepped Upper Deck

BCS-I TM2 International Tonnage Convention 1969 –
Heat Exchangers (Coolers) Treatment

Determination of Moulded Depth (D) for Ships with an Open Mooring Deck Aft or Stepped Upper Deck

Regulation 2 (2) (c) of Annex 1

When calculating the net tonnage for ships with an open mooring deck aft, the moulded depth should be measured to the line of the open mooring deck continued forward parallel to the raised part of the upper deck (depth D1 in Figure 1) and not to the raised part of the upper deck (depth D2 in Figure 1). If the upper deck is continued aft over the mooring deck, the moulded depth should still be taken as D1 in Figure 1, provided that the side openings allow the space below the upper deck to be considered as an excluded space according to Regulation 2 (5) (b) and (c).

For ships with a step in the upper deck extending across the full breadth and greater than one metre in length, the moulded depth should be measured to the line of the lower point of the exposed deck extended parallel to the raised part of the exposed deck (depth D1 in Figure 2) and not to the raised part of the upper deck (depth D2 in Figure 2).

If the step or mooring deck is situated outside the length as defined in Article 2(8) of the Convention or if the length of the step or mooring deck is one metre or less, the moulded depth should be taken as D2 in Figures 1 and 2.

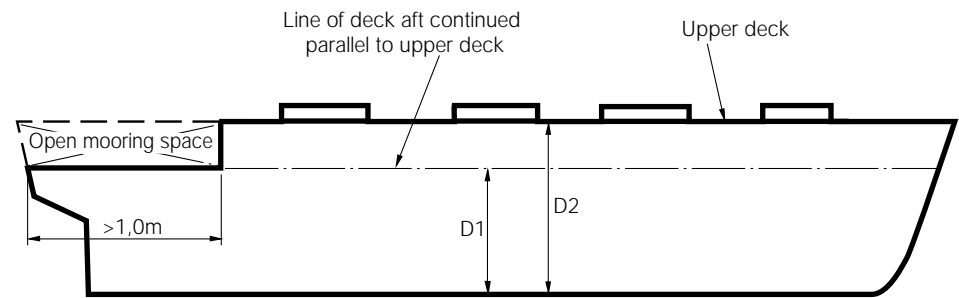


Fig. 1

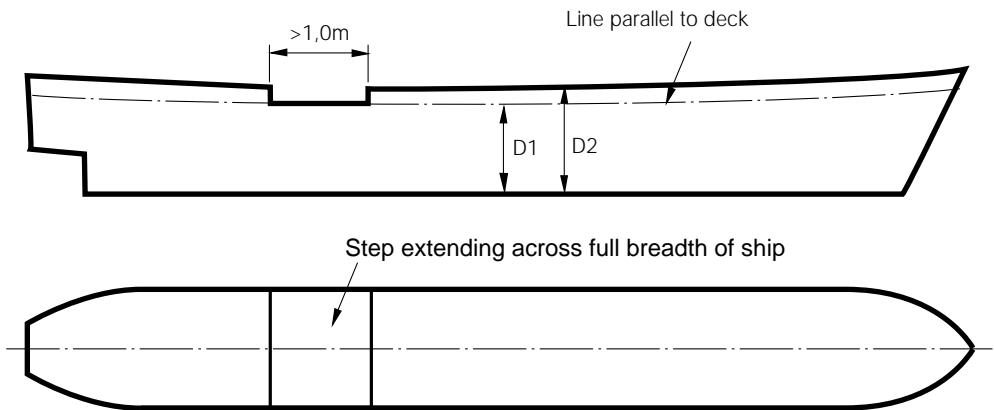


Fig. 2

BCS- I International Tonnage Convention 1969 - TM2 Heat Exchangers (Coolers) Treatment

References

International Convention on Tonnage Measurements of Ships, 1969 - Regulation 2(4):

Enclosed Spaces

Enclosed Spaces are all those spaces which are bounded by the ship's hull, by fixed or portable partitions or bulkheads, by decks or coverings other than permanent or movable awnings. No break in a deck, nor any opening in the ship's hull, in a deck or in a covering of a space, or in the partitions or bulkheads of a space, nor the absence of a partition or bulkhead, shall preclude a space from being included in the enclosed space.

International Convention on Tonnage Measurements of Ships, 1969 - Regulation 6(2):

Calculation of Volumes

Volumes of appendages shall be included in the total volume.

TM.5/Circ.6 - Interpretation R.2(4)-9:

Machinery such as mooring and towing equipment, winches, revolving cranes, cranes with truss structures, and other similar items should not be included in the total volume of all enclosed spaces (V).

TM.5/Circ.6 - Interpretation R.6(2)-1:

Bulbs, fairwaters, propeller shaft bossings or other structures should be treated as appendages.

Interpretation

Heat exchangers (coolers) fitted in hull recesses or outside of the hull shall be treated as machinery under TM.5/Circ.6 Interpretation R.2(4)-9 and not as appendages.

Note:

1. This interpretation is implemented from 1 July 2016.